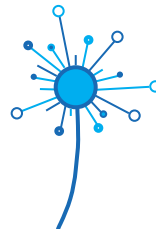




Welcome to

# Learn with Springhead

growing minds, shaping futures



version 030323

## What is this?

This short guide has been created to welcome you to **Learn with Springhead**. At Springhead we are proud of our history of growing not just plants, but minds too. We aim to nurture seeds of ideas and understanding by:

- connecting** people to themselves; to each other; to a sense of place; to nature;
- sharing** this place and its stories to create engaging and meaningful learning;
- exploring** sustainability and what this means to us, in our localities, and for the wider world;
- developing** nature connectedness and ecological wisdom;
- empowering** people to see themselves as agents of change;

We look forward to welcoming you to Springhead!

This guide shares a little more about **our approach** to learning, **our values** and **what to expect from your visit**.

## Our approach to learning

Our approach to learning emerged as a result of a collaboration between The Springhead Trust and Lifeworlds Learning.

**Learn with Springhead** provides opportunities that are participatory and immersive. Our learning encounters feed on the natural curiosity of young people and support them to engage in critical and collaborative thinking.

**Learn with Springhead** builds connections between the opportunities of experiential learning and the knowledge, skills and values of your curriculum.

**Learn with Springhead** enables young people to move purposefully into more challenging areas of learning and thinking. We place young people's voices at the centre and inspire them to exceed their own expectations.

**Learn with Springhead** is driven by a belief in the power of learning to nurture and sustain a better world. We build on our heritage to provide learning that is relevant and meaningful to young people today.

## Our values

Our motivations, or values, are central to what we offer and how we offer it.

### Learn with Springhead

is motivated by:

*connection with nature*

*stewardship*

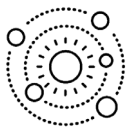
*open-mindedness*

*personal well-being*

*active choices*

## A framework for learning

Our approach to learning comes together with our values in a framework that informs and inspires the encounters we offer. This framework is based on three inter-related phases of learning - **connect, challenge, and change**.



### Connect

How am I connected to this place?

How does this connect with my life?

Why are connections important?

What does being connected mean?



### Challenge

How does this challenge my understanding?

What can I/we offer to this challenge?

Who is involved in this challenge?

How does this challenge make me feel?



### Change

Has my thinking now changed?

What changes might I make?

Who is responsible for change?

What if nothing changes?

Our framework purposefully combines cognitive and emotional aspects of learning and actively encourages reflection, the sharing of perspectives and meaning-making as essential elements of learning.

At times a single activity may combine all three phases of the framework, but they may also be experienced across several activities, or as a learning pathway over several days.

## What to expect

We want your visit to be focused on your learners, their learning, and their enjoyment. To help us achieve this we will arrange a pre-visit consultation (phone, zoom or in person) to discuss your learners, your reasons for coming, and to agree a programme for your visit. We encourage you to read the following information about what to expect ahead of the pre-visit consultation. If you are staying with us then details about accommodation, catering and other residential issues are in our separate **Residential Guide for Teachers**.

### Activities

Our activities are inspired by Springhead and structured to connect with relevant curriculum areas. You can access the full range of activities currently on offer\* and we can advise on tailoring your visit to certain activities or curriculum areas during the pre-visit consultation meeting.

\* If you choose a self-led visit to Springhead then you will have access to a smaller number of activities that can be used during your visit. The full range of activities are available for facilitated visits.

### Planning

You know your learners and we know our site. Together, we can create a unique pathway that sets just the right degree of challenge to help your learners thrive and enjoy their experience. Whether co-created or designed fully by us, we will share the pathway and schedule before you arrive and keep you fully informed of any changes during your time with us.

### Facilitators

We have facilitators who can lead activities for you and your learners. They can help you to make the most of our site and will provide necessary resources. Our facilitators are familiar with running activities to support learning, but we will not know your learners like you do. We expect your own staff to be present at all times and to assist with behavioural issues and any special educational needs. If you prefer to use our activities or site without our facilitators then we can accommodate that too.

### Briefings

We know that a visit goes more smoothly when everyone knows what is happening. During your visit you will be given regular briefings to ensure that everyone understands where they are supposed to be, who they are learning with, that they are properly dressed, and that they have any necessary equipment. We will also use briefings to provide safety advice and practical information about toilet and refreshment breaks. Briefing sessions will be added into the schedule for your visit.

### Weather

Our learning is focused on outdoor encounters, but there are times when the weather may not have read the memo! We will keep a close eye on expected weather conditions for your visit and remain as close to any agreed plans as safety and comfort allow. We will recommend alternative activities or scheduling if needed and inform you of this at the earliest opportunity. British weather can change quickly and so learners should be advised to bring appropriate clothing. Our kit list can help you to plan this with learners and their caregivers.